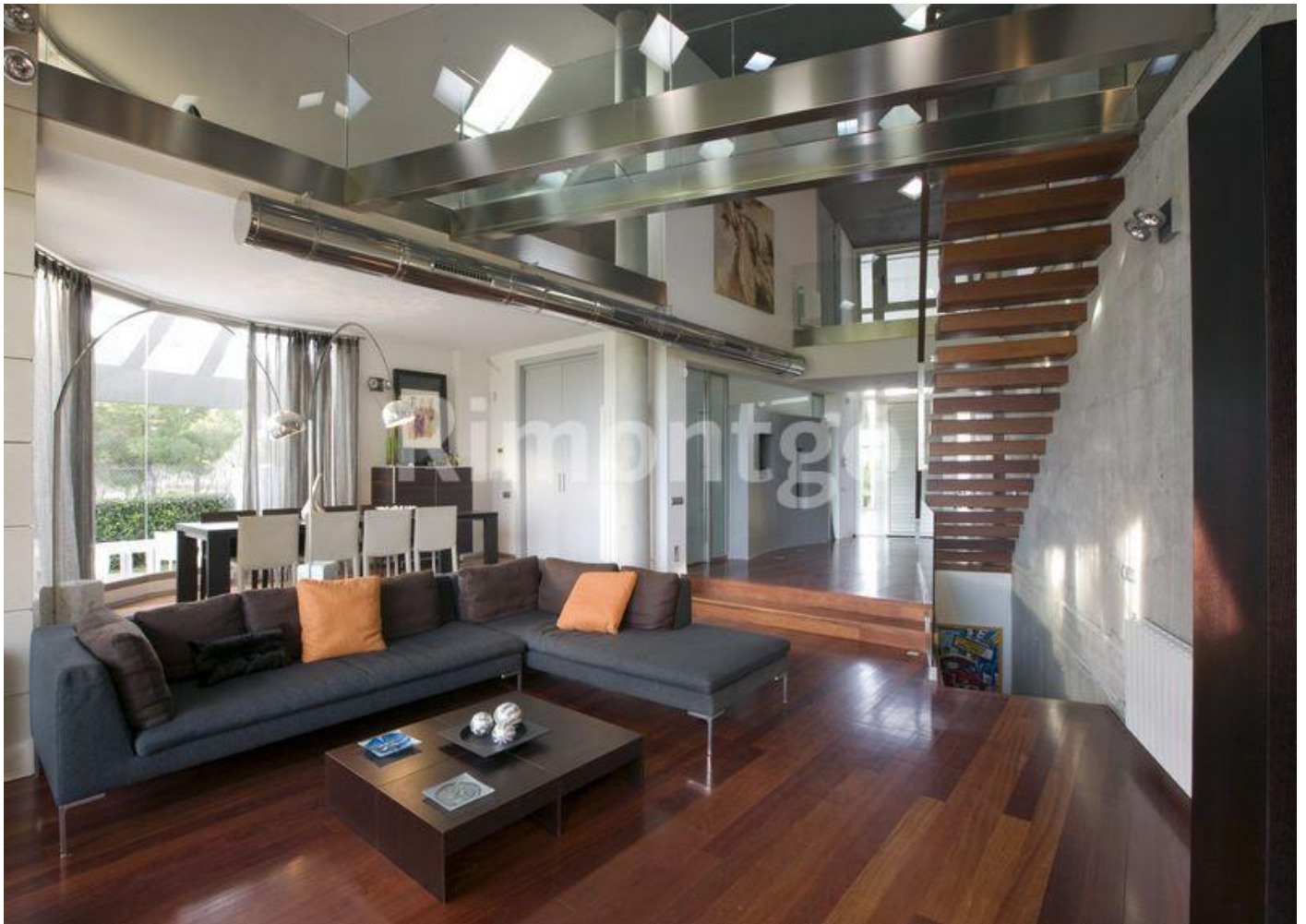




## **RMGV508 - Villa in Betera, Valencia, Spain**

If ever there was a villa that embodies modernity, personality, vanguardist architecture and homeliness within a single structure it is this fine property in the exclusive Torre en Conill urbanization of Valencia. Where many homes are claimed to feature cutting edge modern design, and many an architect likewise boasts to have produced a modern classic, this property's immediate impact speaks for itself. Distinguishing itself from the competition through its harmony of proportion, dimension, layout and aesthetics, as well as the tasteful application and juxtaposition of materials, this is a property that is simultaneously a stunning example of true modernist design and also a comfortable home made for family living.



Rounded shapes form a clear theme, both within and out, with large windows filling the home with light and warmth, as well as creating a sense of space and clarity that is enhanced by high ceilings and a two-story structure opened up with galleries and staircases. In this way the different parts of the 650m2 home flow together as a series of interconnected living spaces. Views form an important part of the property's allure, as the green lawns, the Japanese fish pond, the swimming pool and the adjoining fairways of the

El Escorpión golf course can be seen from many a vantage point. Designed to detailed perfection, this is both a practical and comfortable home and a fine example of contemporary vanguardism, with treated concrete walls, glass panelling, rich wooden floors and chrome railings, and exposed piping creating a mesmerising blend of Le Corbusier machinism and New York loft sophistication.



Style does not, however, come at the expense of function, nor indeed the other way round. As befits a fine example of cutting edge architecture, this home exudes a sense of symmetry and balance that keeps proportion, detailing and aesthetics in harmony with the practical functions of a home. As a result, the five bedrooms, four bathrooms, designer kitchen and series of living rooms and terraces all flow into one another without creating other boxy rooms or large open spaces. One of the most exciting properties in the luxurious Torre en Conill area of Valencia, this is a modern gem surrounded by golf courses, fine homes and first class services at a short distance from the vibrant centre of Valencia.





**Rimontgó**  
SINCE 1959

extraordinary life houses



Rimontgó  
(+34) 963 504 444  
valencia@rimontgo.es  
<https://www.rimontgo.com>



**Rimontgó**  
SINCE 1959

extraordinary life houses



Rimontgó  
(+34) 963 504 444  
valencia@rimontgo.es  
<https://www.rimontgo.com>



**Rimontgó**  
SINCE 1959

extraordinary life houses



Rimontgó  
(+34) 963 504 444  
valencia@rimontgo.es  
<https://www.rimontgo.com>





**Rimontgó**  
SINCE 1959

extraordinary life houses



Rimontgó  
(+34) 963 504 444  
valencia@rimontgo.es  
<https://www.rimontgo.com>



**Ref.:** RMGV508

**For Sale**

**Price:** 1.500.000 EUR  
1.764.750 USD  
1.276.395 GBP

**Bedrooms:** 5

**Bathrooms:** 4

**Built:** 673 m<sup>2</sup>

**Plot:** 1.010 m<sup>2</sup>

**Energy performance certificate**



**Features**

- Near golf course
- Elevator
- Alarm
- Near to transport

- Front line golf
- Gym
- Telephone
- Water tank

- Private security 24h.
- Air conditioning
- Near to amenities
- Equipped Kitchen

(\*) Prices valid on printing date: 10-22-2021

Offer subject to error/omission/price modification or any other change without prior notice. The information included here does not belong to any offer or agreement. Taxes and property transfer expenses are not included in price.